



SAMPSON COUNTY 911 & ES FACILITIES

CLINTON,
NORTH CAROLINA

CONSTRUCTION
DOCUMENTS

WALL SECTIONS

DATE 12.04.2020
PROJECT NO 20003

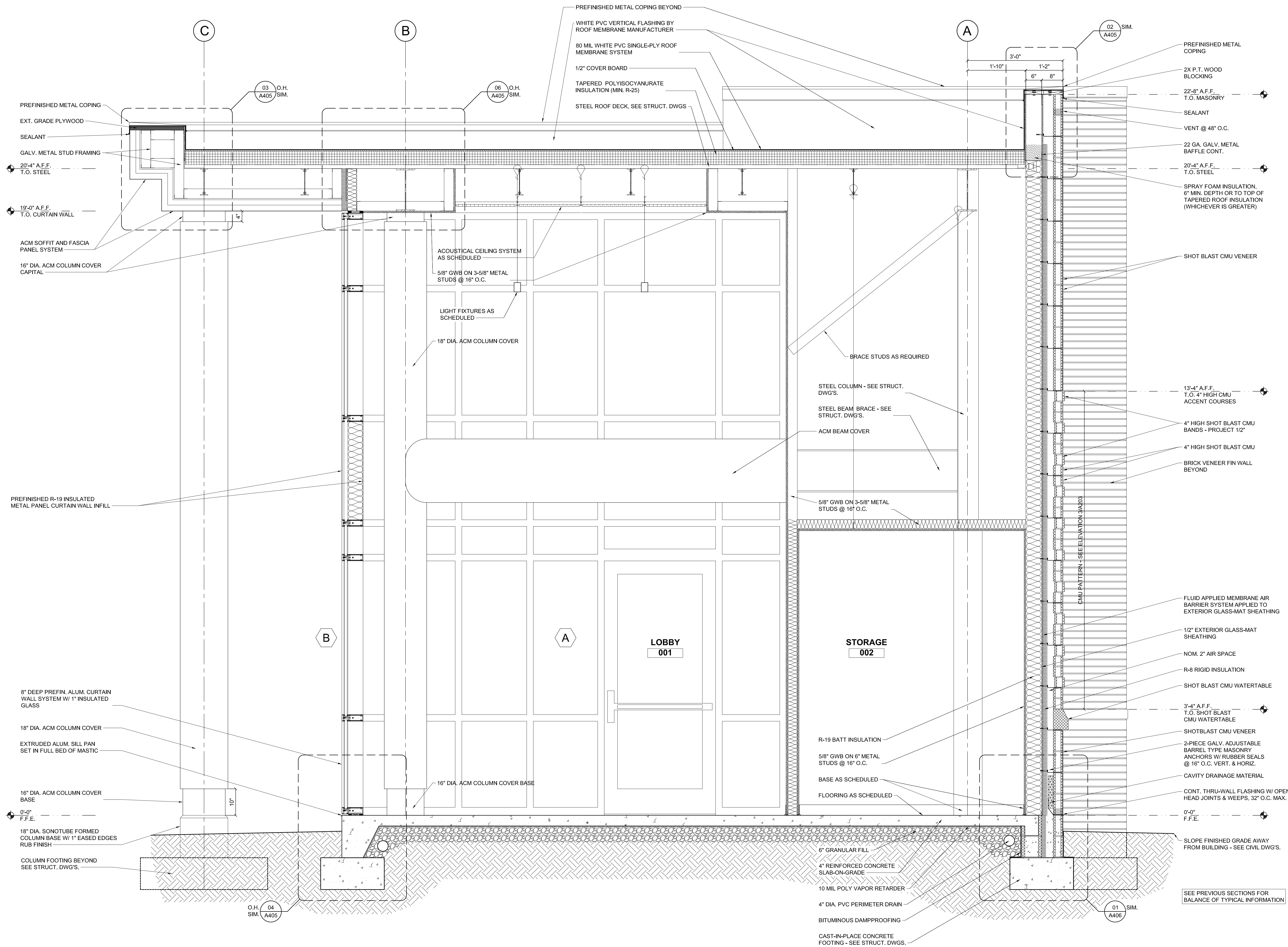
REVISIONS
NUM. DATE DESCRIPTION:
REV1 12/17/20 REVISION 01

THIS DRAWING IS THE PROPERTY OF ADW ARCHITECTS, P.A. AND
SHALL NOT BE REPRODUCED OR COPIED IN WHOLE OR IN PART. IT
SHALL NOT BE USED ON ANY OTHER PROJECT OR GIVEN TO ANY
OTHER COMPANY OR AGENCY WITHOUT THE CONSENT OF ADW
ARCHITECTS, P.A.

ADW ARCHITECTS, P.A.
CORPORATE SEAL
50223
12-17-20
SEAL

SHEET NUMBER

A402



REV GENERAL NOTE COORDINATION

WALL SECTION SCALE: 3/4" = 1'-0" 01